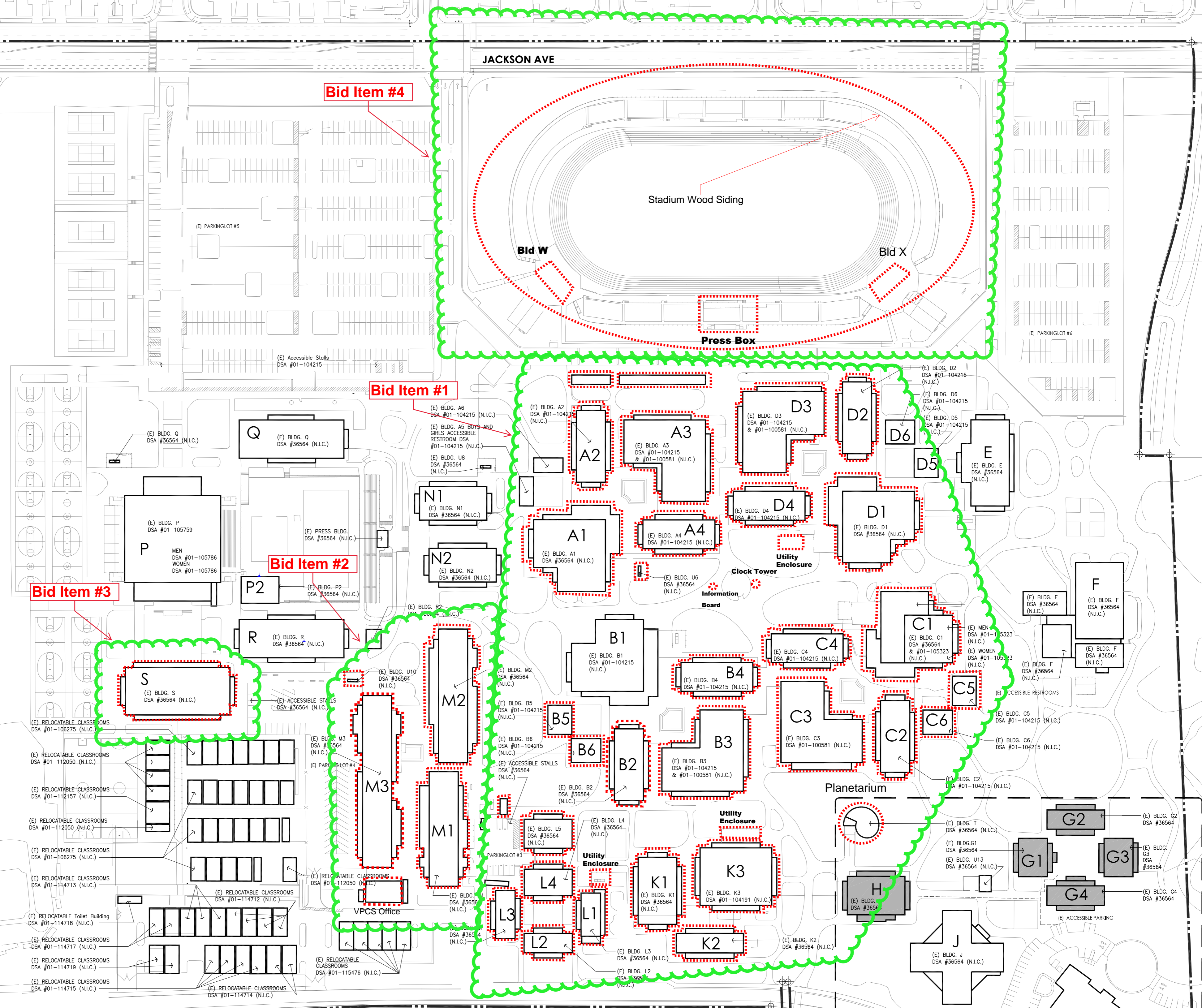


Independence High Campus Site Plan
 DW Exterior Painting (IH)
 F26-XXX-817
 Bid # 39-16-17
 05/25/17

Buildings To Be Painted



Bid Item #4

Bid Item #1

Bid Item #2

Bid Item #3

JACKSON AVE

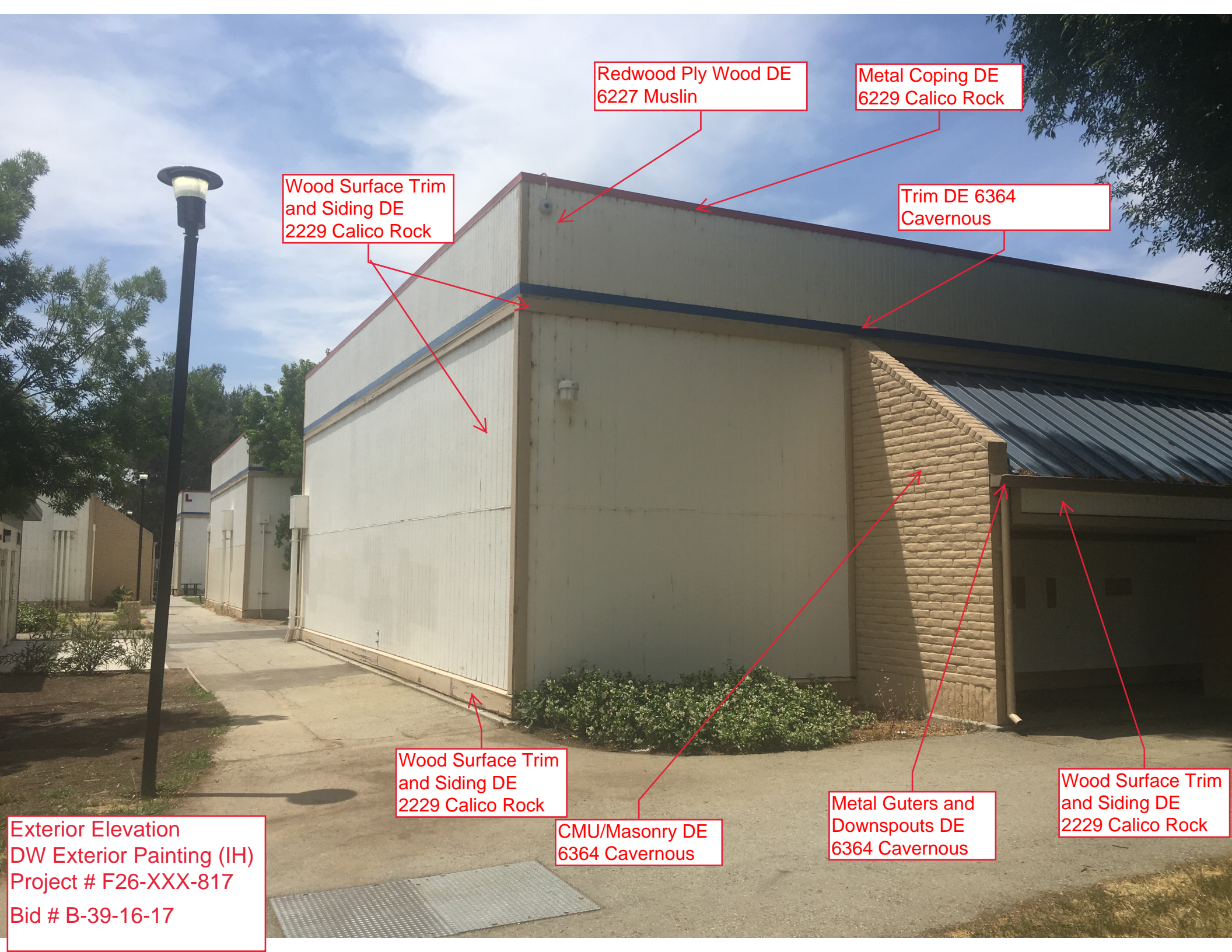
EDUCATIONAL PARK DR.

Contractor Access

(E) CITY OF SAN JOSE EDUCATION PARK LIBRARY (N.I.C.)

Bld	Square Feet
A1	18,147
A2	8,192
A3	17,579
A4	8,279
B2	8,192
B3	17,579
B4	8,279
B5	2,112
B6	2,194
C1	17,621
C2	8,192
C3	17,579
C4	8,279
C5	2,166
C6	2,205
D1	17,579
D2	8,192
D3	17,579
D4	8,279
K1	9,660
K2	5,468
K3	14,626
L1	4,094
L2	3,783
L3	3,750
L4	4,734
L5	4,736
M1	13,996
M2	16,819
M3	9,567
S	17,830
Bus Shelter	3,788
U Blds	675
VPCS Office	2,343
Stadium, Bld X & Bld W	330,321
Planetarium	3,741

IH Campus Bld Schedule
Plan DW Exterior Painting (IH)
F26-XXX-817
Bid # 39-16-17



Redwood Ply Wood DE
6227 Muslin

Metal Coping DE
6229 Calico Rock

Wood Surface Trim
and Siding DE
2229 Calico Rock

Trim DE 6364
Cavernous

Wood Surface Trim
and Siding DE
2229 Calico Rock

CMU/Masonry DE
6364 Cavernous

Metal Gutters and
Downspouts DE
6364 Cavernous

Wood Surface Trim
and Siding DE
2229 Calico Rock

Exterior Elevation
DW Exterior Painting (IH)
Project # F26-XXX-817
Bid # B-39-16-17



CMU/Masonry &
Wood Doors DE
6229 Calico Rock

Utility Bld Exterior Elevation
DW Exterior Painting (IH)
Project # F26-XXX-817 Bid #
B-39-16-17



Example Bld For Reference Only
DW Exterior Painting (IH) Project #
F26-XXX-817
Bid # B-39-16-17



Example Bld For Reference Only
DW Exterior Painting (IH) Project #
F26-XXX-817
Bid # B-39-16-17



U-8

Example Bid For Reference
Only DW Exterior Painting (IH)
Project # F26-XXX-817
Bid # B-39-16-17

DRAWING KEY

BUILDINGS TO BE PAINTED SEE ELEVATIONS FOR COLORS



COLOR KEY FOR ELEVATION SHEETS.

-  COLOR # 1 : DE 6227 MUSLIN
-  COLOR # 2 : DE 6229 CALICO ROCK
-  COLOR #3 : DE 6364 CAVERNOUS
-  COLOR # 4 : DEA 149 SPICED BERRY (ACCENT COLOR)

For Reference only please refer to site plan for Buildings that need to be painted

EXTERIOR FINISH SCHEDULE					
NO.	ITEM / MATERIAL	LOCATION	PRODUCT / FINISH SYSTEM	COLOR / FINISH	REMARKS
E1	FERROUS METAL, PIPING, MECH. CURB & EQUIPMENT	THROUGHOUT	FIRST COAT - BLOC RUST PREMIUM BRPROO TWO COATS - ACRYLIC SEMI-GLOSS ENAMEL EVERSHIELD EVSH50	DUNN EDWARDS, SEMI-GLOSS, FOR COLOR SEE ELEVATIONS	ALL EXPOSED METAL ITEMS WHETHER VISIBLE OR NOT.
E2	GALVANIZED METAL, GUTTERS, DOWNSPOUTS, FLASHING, TRIM, DUCTWORK, PIPING, & CONDUIT	THROUGHOUT	PRETREATMENT - KRUDKUTTER METAL ETCH FIRST COAT - 100% ACRYLIC METAL PRIMER ULTRAGRIP PREM UGPROO TWO COATS - EVERSHIELD EVSH50 HIGH PERFORMANCE ACRYLIC SEMI-GLOSS ENAMEL.	DUNN EDWARDS, SEMI-GLOSS, FOR COLOR SEE ELEVATIONS	ALL EXPOSED METAL ITEMS WHETHER VISIBLE OR NOT.
E3	WOOD SURFACES, TRIM & SIDING.	THROUGHOUT	FIRST COAT - EZ PRIME EZPROOEXTERIOR 100% ACRYLIC WOOD PRIMER-SEALER TWO COATS - EVERSHIELD EVSH5- 100% ACRYLIC SEMI-GLOSS ENAMEL	DUNN EDWARDS, SEMI-GLOSS, FOR COLOR SEE ELEVATIONS.	REFASTEN LOOSE PANELS AND BATTENS.
E4	WOOD SIDING & SOFFITS	THROUGHOUT	FIRST COAT - EZ PRIME EXPROO EXTERIOR 100% ACRYLIC WOOD PRIMER-SEALER TWO COATS - EVERSHIELD EVSH50 100% ACRYLIC SEMI-GLOSS ENAMEL.	DUNN EDWARDS, SEMI-GLOSS, FOR COLOR SEE ELEVATIONS.	REFASTEN LOOSE PANELS AND BATTENS.
E5	CMU / MASONRY	THROUGHOUT	SPOT PRIME - EFF-STOP PREMIUM ESPROO MASONRY PRIMER/SEALER TWO COATS - EVERSHIELD EVSH50 EVERSHIELD SEMI-GLOSS EXTERIOR PAINTLATEX PAINT EVSH50	DUNN EDWARDS, SEMI-GLOSS, FOR COLOR SEE ELEVATIONS.	ALL VOIDS, CRACKS, CRACKED MORTAR JOINTS, AND MEETING OF DISSIMILAR MATERIALS SHOULD BE PATCHED WITH VIP5000 SERIES SEALANTS
E6	PREVIOUSLY PAINTED PLASTER AND CONCRETE	THROUGHOUT	SPOT PRIME WHERE NEEDED: EFF-STOP, MASONRY PRIMER/SEALER (ESPROO) FIRST AND SECOND COAT: EVERSHIELD, EXTERIOR/INTERIOR SEMI-GLOSS PAINT (EVSH50)	DUNN EDWARDS, SEMI-GLOSS, FOR COLOR SEE ELEVATIONS.	ALL VOIDS, CRACKS, CRACKED MORTAR JOINTS, AND MEETING OF DISSIMILAR MATERIALS SHOULD BE PATCHED WITH VIP5000 SERIES SEALANTS
SEE OUTLINE SPECIFICATION FOR A MORE EXTENSIVE LIST OF MATERIALS					

KEYNOTES

- ① CLEAN FRP DOOR, NO PAINT (DOUBLE CHECK WITH CLIENT)
- ② PAINT DOOR FRP METAL DOOR FRAME & SIDE LIGHT, REMOVE METAL MESH.
- ③ PAINT METAL ROLL UP DOORS
- ④ PAINT PERFORATED METAL PANEL & METAL DECK STAIR UNDERSIDE
- ⑤ PAINT METAL LOUVERS
- ⑥ PAINT ADJACENT PLANTERS THAT ARE ALREADY PAINTED
- ⑦ DO NOT PAINT EXPOSED CONCRETE
- ⑧ DO NOT PAINT EXISTING METAL ROOFING & ADJACENT FLASHING.
- ⑨ PAINT METAL DOOR
- ⑩ PAINT WOOD DOOR & WOOD WINDOW TRIMS
- ⑪ CLEAR PLANTS
- ⑫ PAINT METAL STORAGE CONTAINER, MAKE SURE PAINT ADHERES TO
- ⑬ OLD LETTERING (CURRENTLY PEELING OFF)
- ⑭ REPAIR DAMAGED SURFACE BEFORE PAINTING
- ⑮ PAINT WOOD STORAGE SHED
VIF EXTEND OF IVY DAMAGE AND PREP SURFACES ACCORDINGLY
- ⑯ COVER ALL GRAFFITI COVERED AT POOL WALL FACING N
- ⑰ REPAIR WHERE REQUIRED & PAINT PIPE INSULATION
- ⑱ PAINT DRINKING FOUNTAINS UNDER SHEDS @ BUILDING Q

GENERAL NOTES

1. SEE BUILDIGN "N" BULLETIN 25 FOR EXTERIOR PAINT SPECS
2. SEE ATTACHED EXTERIOR ELEVATIONS FOR COLOR LOCATIONS
3. ADD ALTERNATE 1 = LOW WALLS, PLANTERS & UTILITY ENCLOSURES HIGHLIGHTED IN ORANGE
4. METAL ROOF TO STAY AS IS.
5. EXTERIOR FRP DOORS AS IS. EXTERIOR WOOD WINDOW FRAMES & METAL DOORS TO MATCH ADJACENT WALL COLOR.
- LOUVERS (AT POOL BUILDING) TO MATCH ADJACENT WALL COLOR. WALL MOUNTED LIGHT FIXTURES??.
- GENERAL NOTES
6. PAINT ALL CONDUIT, DOWNSPOUTS & PIPE INSULATION
- 7.. REMOVE STICKERS FROM DOORSTOPS & POWER WASH
8. LIGHT FIXTURES, DO NOT PAINT, BUT CLEAN INSIDE & OUTSIDE TYPICAL
9. UNFINISHED DOWN SPOUT ON SOUTH ELEVATION TO BE ETCHED & PAINTED
10. PREP SURFACE PER REQUIREMENTS IN SPECIFICATIONS
11. REMOVE, CLEAN AND REINSTALL ALL SIGNAGE
12. PREP SURFACES ACCORDING TO SPECIFICATIONS.

THIS DOES NOT INCLUDE ANY WAYFINDING SCOPE

BUILDING CONSTRUCTION TYPE VARIES SEE LIST BELOW

- WOOD CEILING AT SHEDS TYPICAL
- BUILDING P, Q & R
- CONCRETE
- POOL EQUIPMENT BUILDING
- WOOD WITH CMU BASE
- PRESS BOX
- WOOD WITH CONCRETE RETAINING WALLS
- BUILDING E (MUSIC)
- WOOD BODY WITH CMU SHED WING WALLS.
- BUILDING

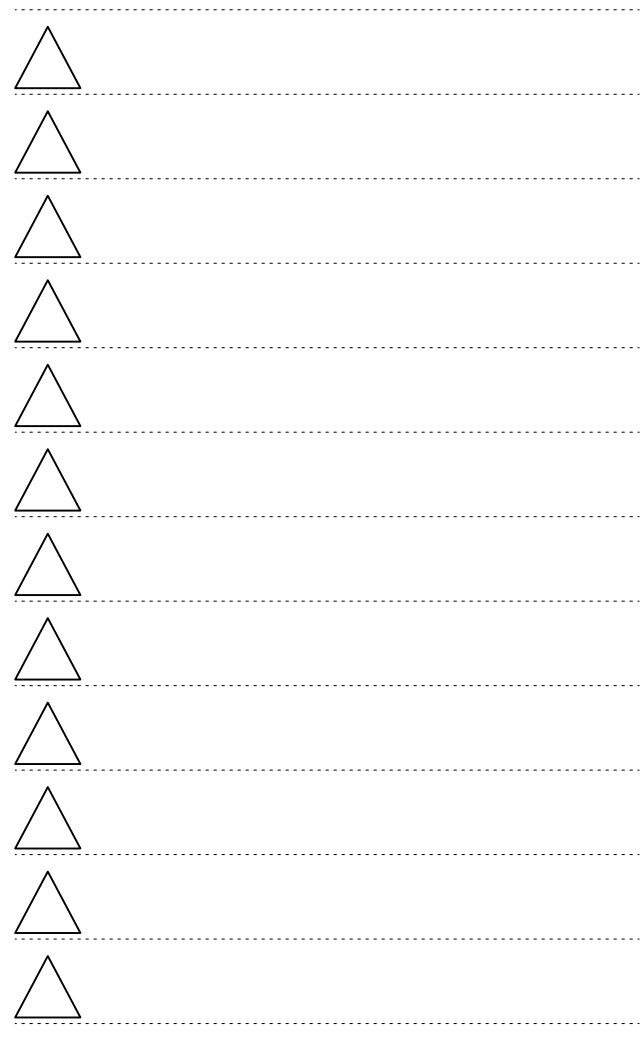
**DW Exterior Painting (IH) Project # F26-XXX-817
Bid # B-39-16-17**

DW Exterior Painting (IH)
 Project # F26-XXX-817
 Bid # B-39-16-17

For Reference only please refer to site plan
 for Buildings that need to be painted

KEYNOTES

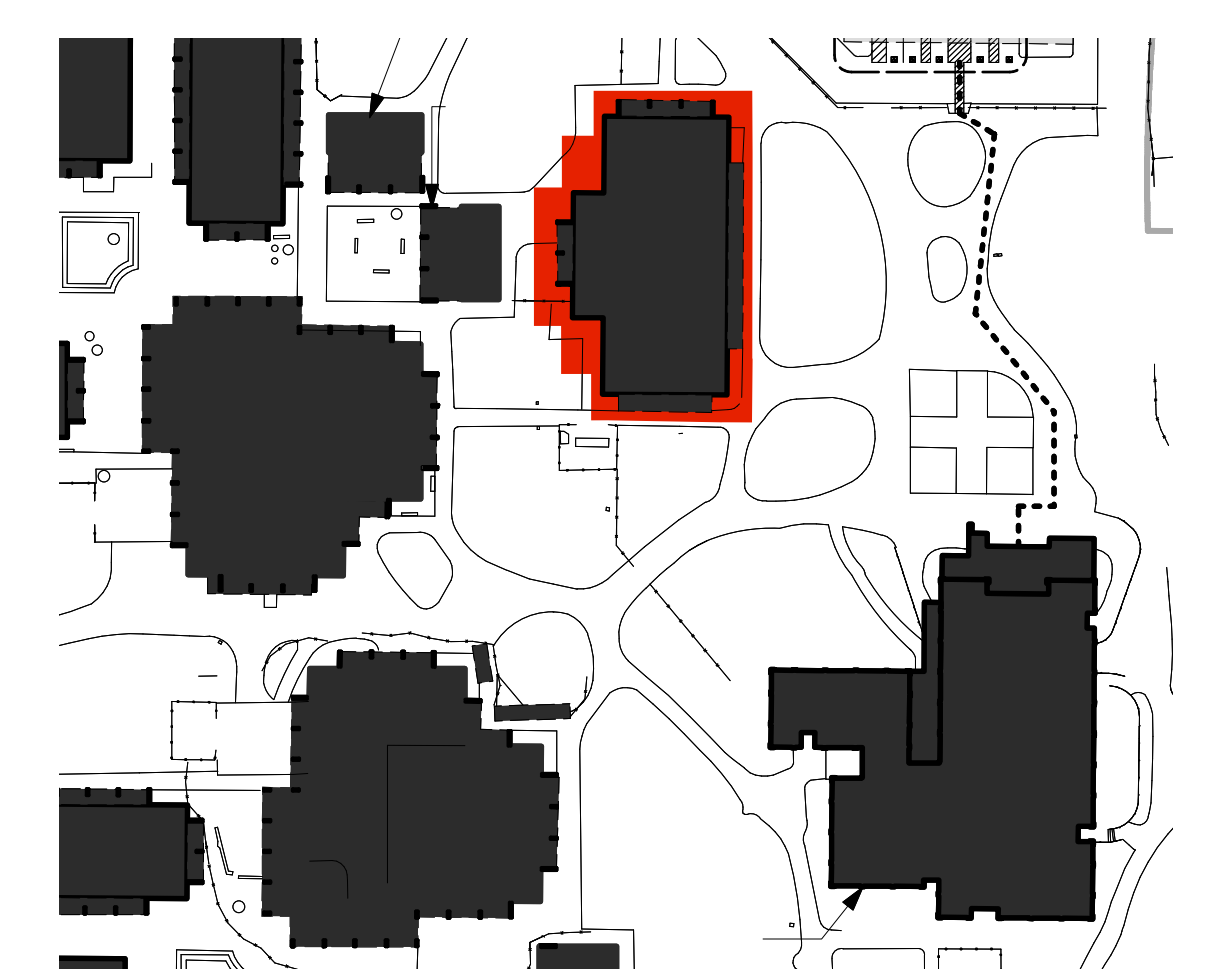
- 1 CLEAN FRP DOOR, NO PAINT (DOUBLE CHECK WITH CLIENT)
- 2 PAINT DOOR FRP METAL DOOR FRAME & SIDE LIGHT, REMOVE METAL MESH.
- 3 PAINT METAL ROLL UP DOORS
- 4 PAINT PERFORATED METAL PANEL & METAL DECK STAIR UNDERSIDE
- 5 PAINT METAL LOUVERS
- 6 PAINT ADJACENT PLANTERS THAT ARE ALREADY PAINTED
- 7 DO NOT PAINT EXPOSED CONCRETE
- 8 DO NOT PAINT EXISTING METAL ROOFING & ADJACENT FLASHING.
- 9 PAINT METAL DOOR
- 10 PAINT WOOD DOOR & WOOD WINDOW TRIMS
- 11 CLEAR PLANTS
- 12 PAINT METAL STORAGE CONTAINER, MAKE SURE PAINT ADHERES TO OLD LETTERING (CURRENTLY PEELING OFF)
- 13 REPAIR DAMAGED SURFACE BEFORE PAINTING
- 14 PAINT WOOD STORAGE SHED
- 15 VIF EXTENT OF IVY DAMAGE AND PREP SURFACES ACCORDINGLY
- 16 COVER ALL GRAFFITI COVERED AT POOL WALL FACING N
- 17 REPAIR WHERE REQUIRED & PAINT PIPE INSULATION
- 18 PAINT DRINKING FOUNTAINS UNDER SHEDS @ BUILDING Q

CODY ANDERSON WASNEY ARCHITECTS	
STAMP	
CONSULTANTS	
REVISION	DATE
100% SCHEMATIC DESIGN	1/30/2015
	

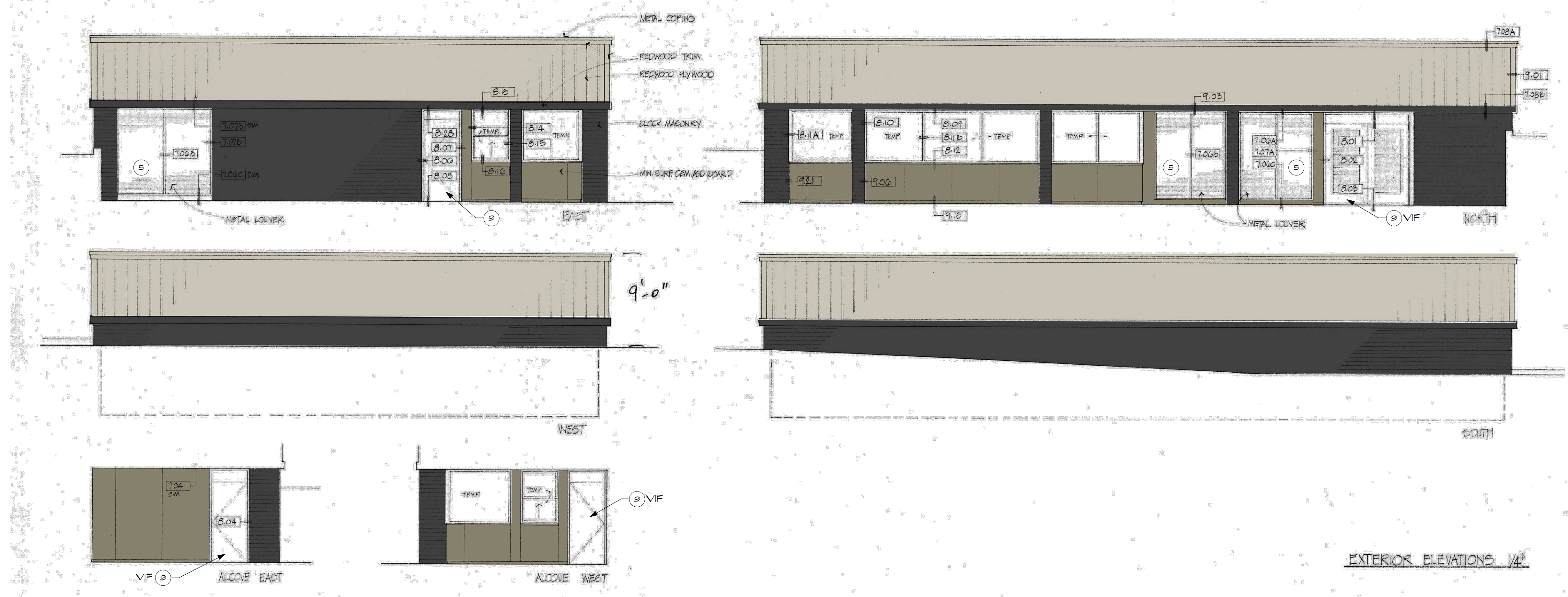


BUILDING E EXTERIOR ELEVATIONS - MUSIC
 SCALE: 3/32" = 1'-0"

2

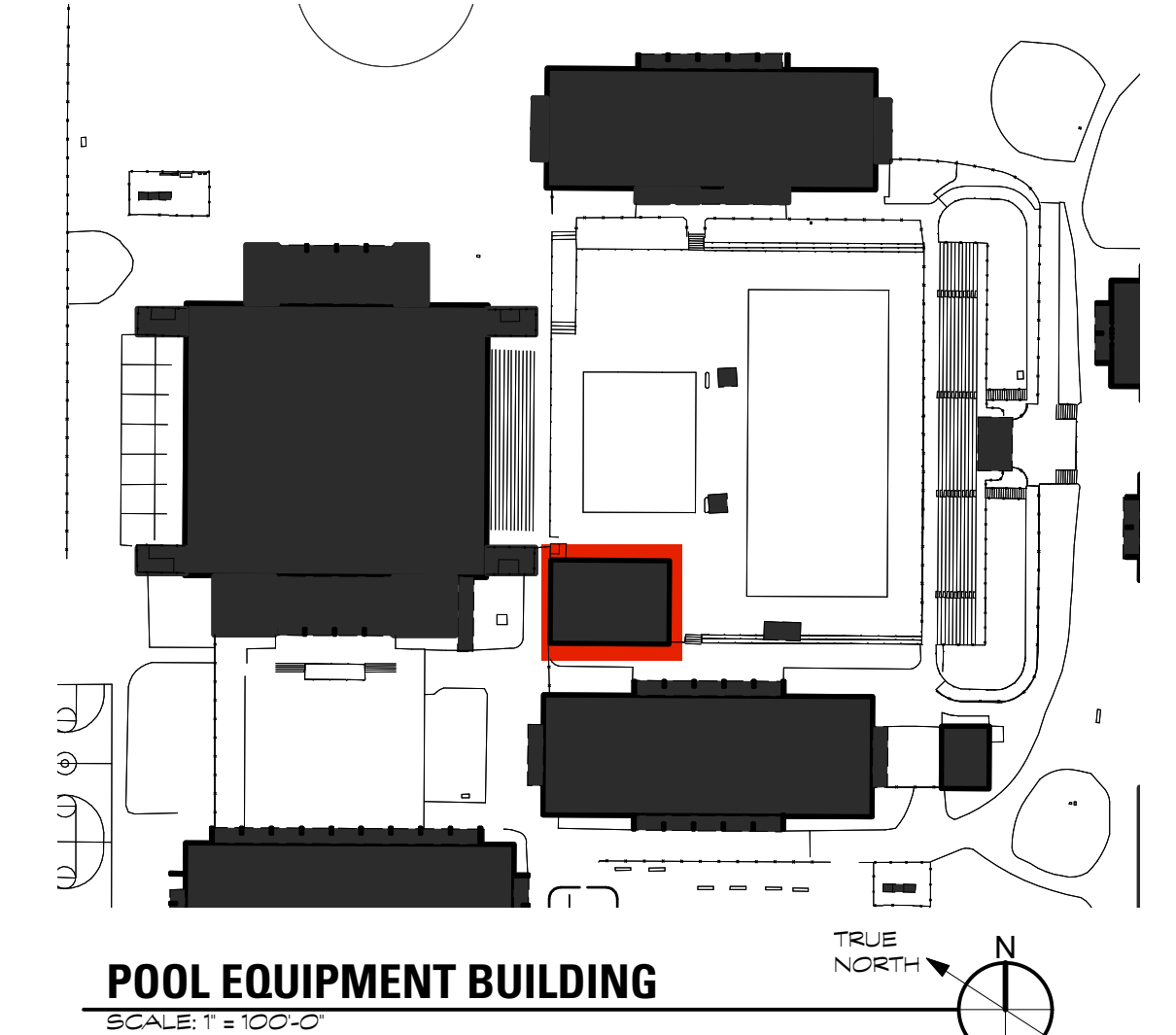


BUILDING E
 SCALE: 1/100'-0"



EXTERIOR ELEVATIONS - POOL EQUIPMENT
 SCALE: 3/16" = 1'-0"

1



POOL EQUIPMENT BUILDING
 SCALE: 1/100'-0"

PROJECT NAME
 INDEPENDENCE HIGH SCHOOL
IHS CAMPUS IMPROVEMENT
 1776 EDUCATIONAL PARK DRIVE
 SAN JOSE, CA 95133

SHEET TITLE
EXTERIOR ELEVATIONS

PROJECT NO: 13025
 DRAWN BY: ELISE BENGER
 CHECKED BY: B. MCCLURE

SHEET

A4.3

DW 5/29/15
 DW 5/29/15
 DW 5/29/15

STAMP

CONSULTANTS

REVISION	DATE
100% SCHEMATIC DESIGN	1/30/2015

PROJECT NAME

INDEPENDENCE HIGH SCHOOL
IHS CAMPUS IMPROVEMENT
1776 EDUCATIONAL PARK DRIVE
SAN JOSE, CA 95133

SHEET TITLE

EXTERIOR ELEVATIONS

PROJECT NO. 13025

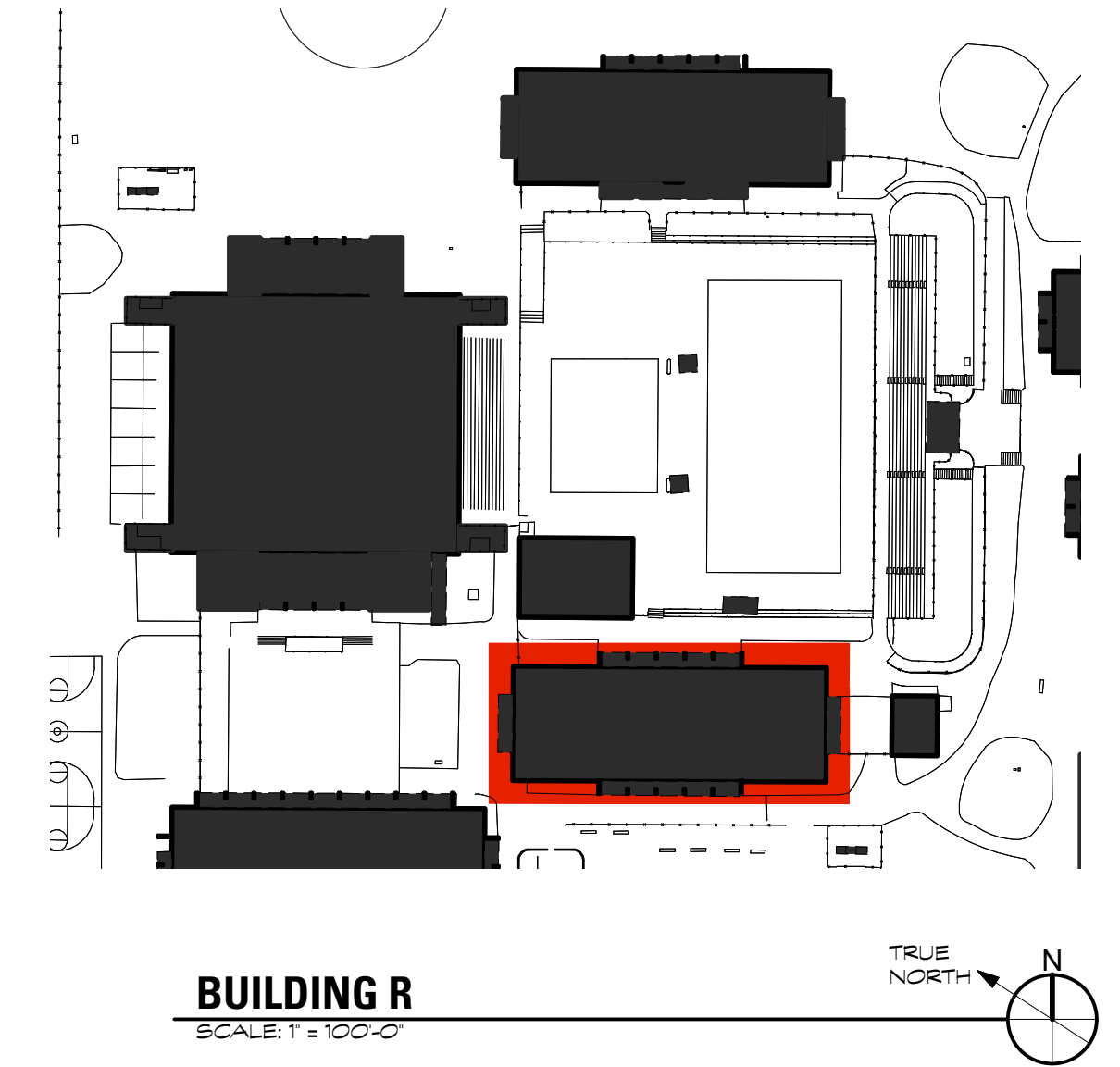
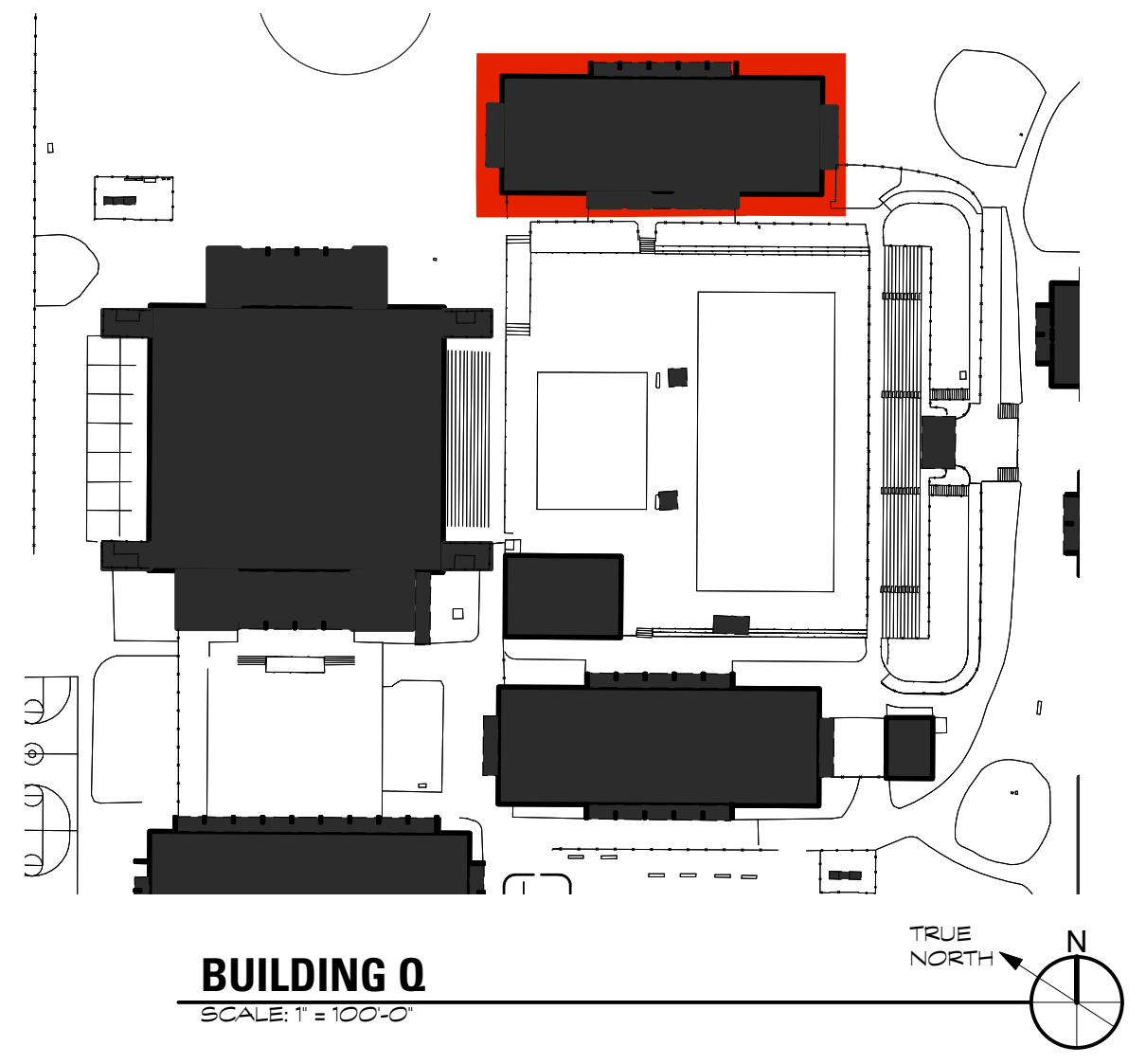
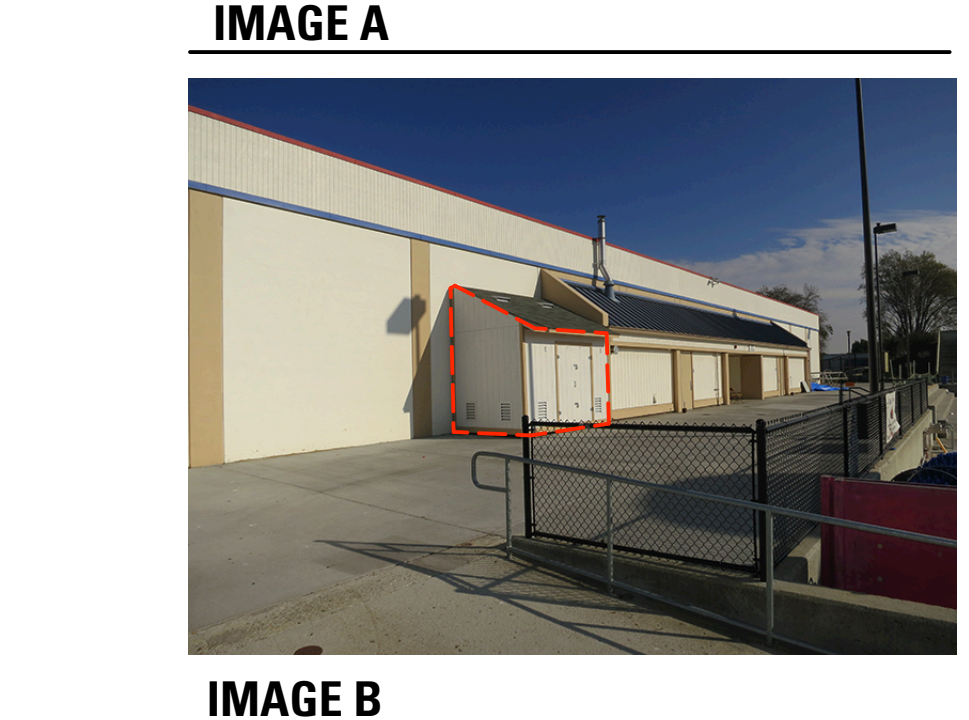
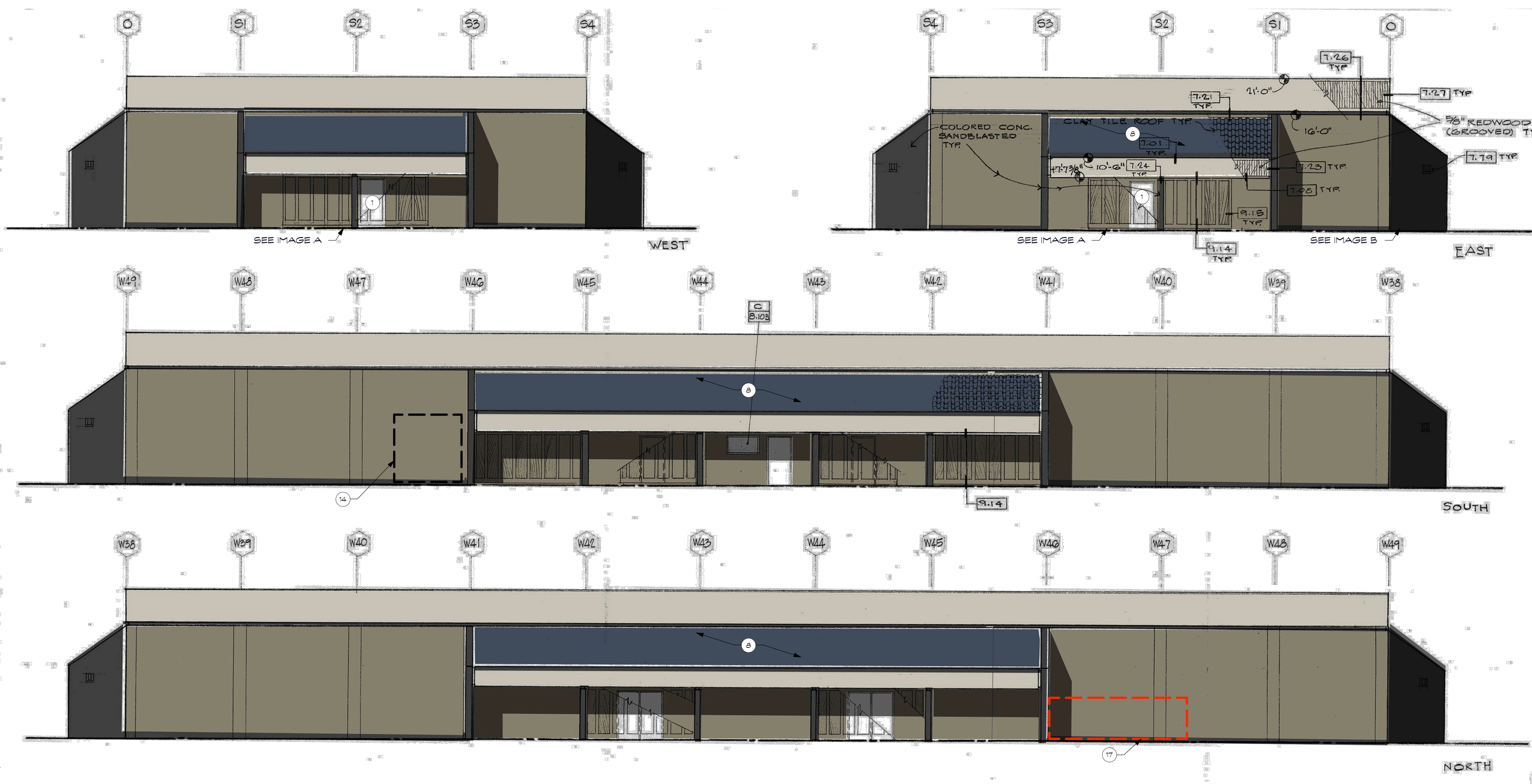
DRAWN BY ELSE SENGER

CHECKED BY B. MCCLURE

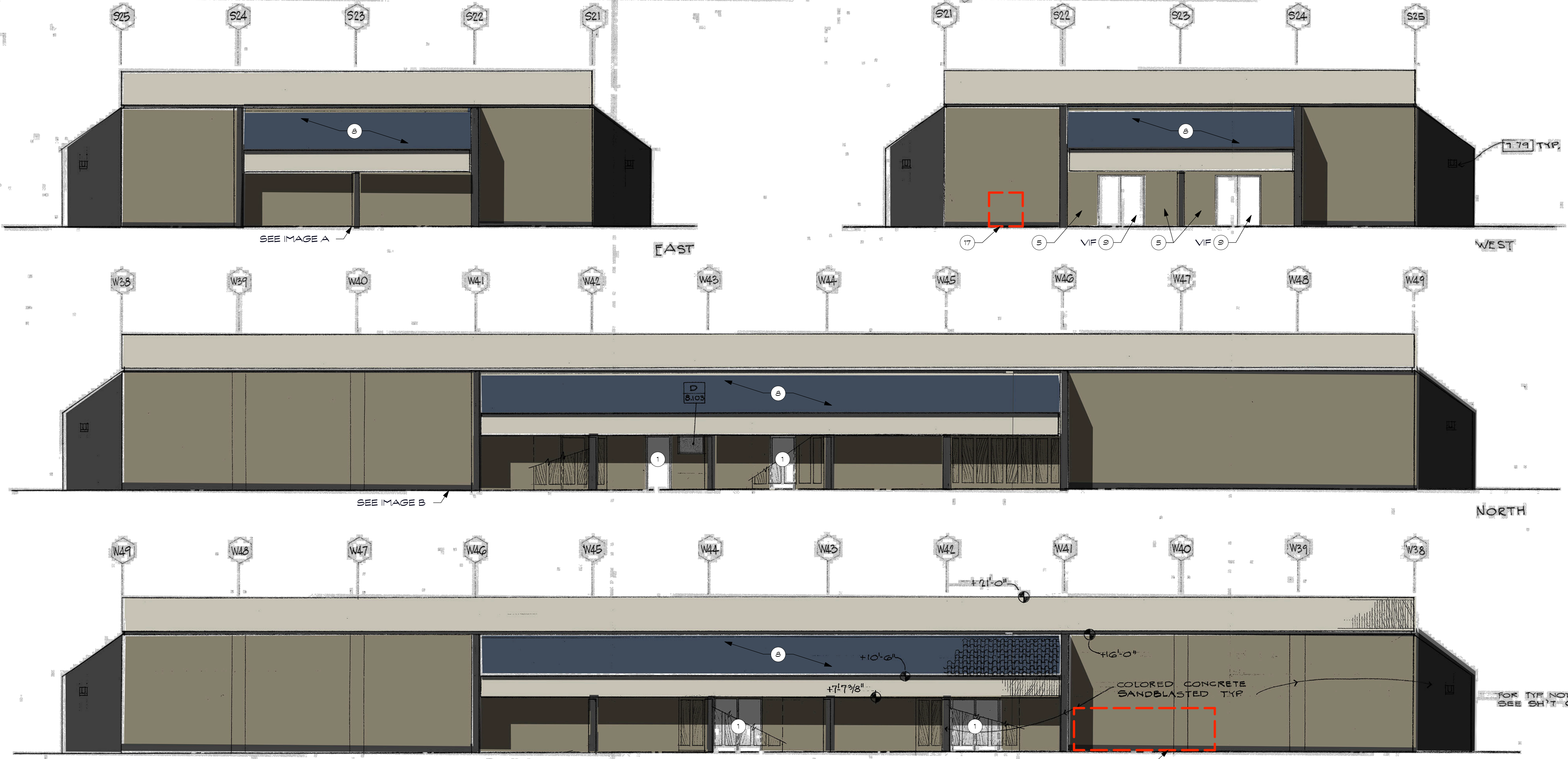
SHEET

KEYNOTES

- 1 CLEAN FRP DOOR, NO PAINT (DOUBLE CHECK WITH CLIENT)
- 2 PAINT DOOR FRP METAL DOOR FRAME & SIDE LIGHT, REMOVE METAL MESH.
- 3 PAINT METAL ROLL UP DOORS
- 4 PAINT PERFORATED METAL PANEL & METAL DECK, STAIR UNDERSIDE
- 5 PAINT METAL LOUVERS
- 6 PAINT ADJACENT PLANTERS THAT ARE ALREADY PAINTED
- 7 DO NOT PAINT EXPOSED CONCRETE
- 8 DO NOT PAINT EXISTING METAL ROOFING & ADJACENT FLASHING.
- 9 PAINT METAL DOOR
- 10 PAINT WOOD DOOR & WOOD WINDOW TRIMS
- 11 CLEAR PLANTS
- 12 PAINT METAL STORAGE CONTAINER, MAKE SURE PAINT ADHERES TO OLD LETTERING (CURRENTLY PEELING OFF)
- 13 REPAIR DAMAGED SURFACE BEFORE PAINTING
- 14 PAINT WOOD STORAGE SHED
- 15 VIF EXTENT OF IVY DAMAGE AND PREP SURFACES ACCORDINGLY
- 16 COVER ALL GRAFFITI COVERED AT POOL WALL FACING N
- 17 REPAIR WHERE REQUIRED & PAINT PIPE INSULATION
- 18 PAINT DRINKING FOUNTAINS UNDER SHEDS @ BUILDING Q



BUILDING Q EXTERIOR ELEVATIONS - BOYS LOCKERS
SCALE 1/8"=1'-0"



BUILDING R EXTERIOR ELEVATIONS - GIRLS LOCKERS
SCALE 1/8"=1'-0"

For Reference only please refer to site plan for Buildings that need to be painted

DW Exterior Painting (IH)
Project # F26-XXX-817 Bid
B-39-16-17